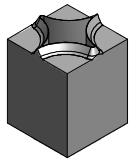
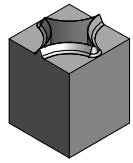


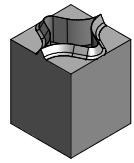
**FS1001-1**



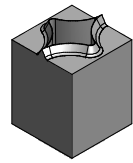
**FS1002-1**



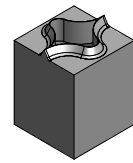
**FS1003-1**



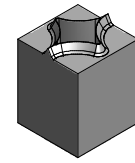
**FS1005-1**



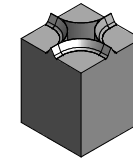
**FS1006-1**



**FS1007-1**



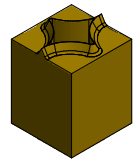
**FS1008-1**



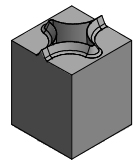
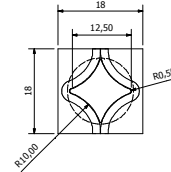
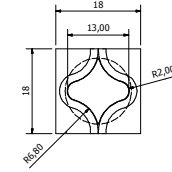
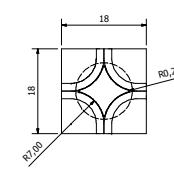
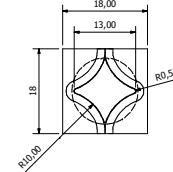
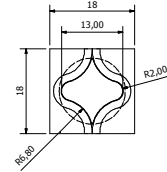
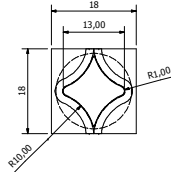
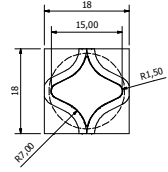
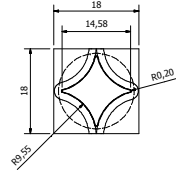
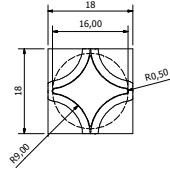
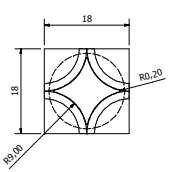
**FS1818-R7**



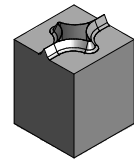
**TFS1007-1**  
TiCN COATED



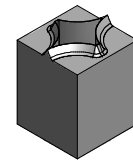
**TFS1008-1**  
TiCN COATED



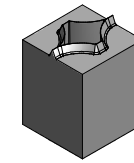
**FS1008-7R**



**FS1010-1**



**FS1103-1**

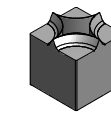


**FS1818-10**

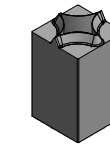


**Full Star Punches**

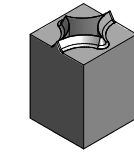
Web - [www.stellartechnik.com](http://www.stellartechnik.com)  
Email - [enquiries@stellartechnik.com](mailto:enquiries@stellartechnik.com)  
Tel - +44 (0) 1460 270620



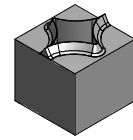
**FS1414-15**



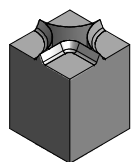
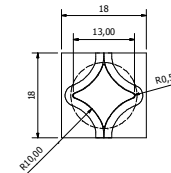
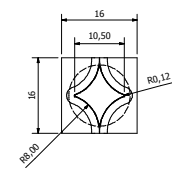
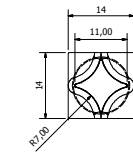
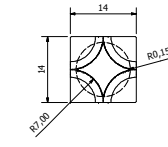
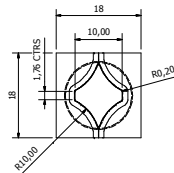
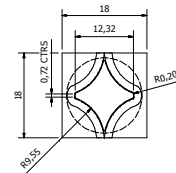
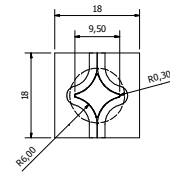
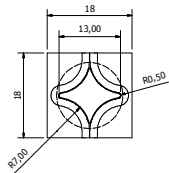
**FS1414-R7**



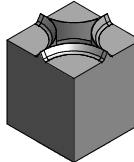
**FS1616-1**



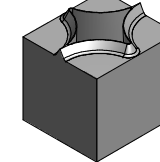
**FS1808-1**



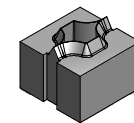
**FS1001-1P**  
WITH PEEL TAB



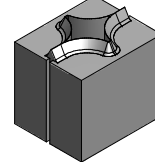
**FS1001-20**



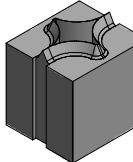
**FS2422-12**



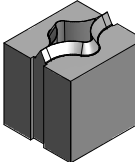
**FS1818-14.5**



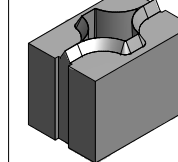
**FS1004-1**



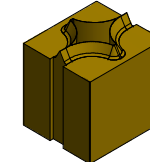
**FS4004-1**



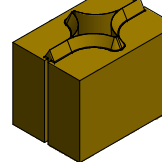
**FS4004-R1.5**



**FS4204-1**



**TFS4004-1**  
TiCN COATED



**TFS2920-1**  
TiCN COATED

